



A warm welcome to Juniper Waratah Lodge

Walking into Juniper Waratah Lodge Residential Aged Care Home, you immediately feel the homely atmosphere and community feel.

With just 18 large private rooms, each with their own ensuite, the small home offers a large outdoor area, lounge and activity space, central dining room and reception lounge which residents and visitors can enjoy.

Residents can choose to pursue their own interests and join an active social calendar of activities, events and bus outings or spend time with the volunteers and local community members welcomed into the home. The home takes cue from its country surrounds, with raised vegetable beds for gardening and visiting therapy animals.

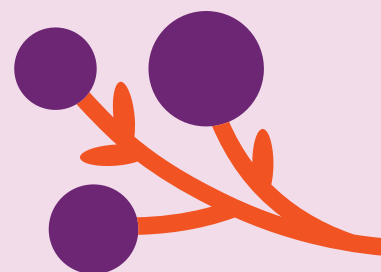
Juniper Waratah Lodge prides itself on the close relationships built between our compassionate and respectful team of staff, residents, their families, and the local community.

The home plays a vital role in the Great Southern region, ensuring that families remain close to their loved ones and stay connected within the community.



Address:

6 Arnott Street, Wagin WA 6315





Home Features

- 18 single rooms with ensuite
- Individualised support through our person-centred care approach
- Enabled Dementia Care
- Communal spaces including dining room and lounge areas
- Easy access to courtyards and gardens
- Laundry and domestic help services



Clinical Care

- 24/7 nursing care
- Regular clinical assessments
- Medication management
- Physiotherapy
- Occupational therapy
- Dietitian
- Podiatrist
- Speech pathology
- Palliative Care



Lifestyle and Amenities

- Therapy and lifestyle group activities
- Group and individual exercise programs
- Resident supported outings
- Pastoral & Spiritual Care



Your neighbourhood

Juniper Waratah Lodge is in the heart of Wagin, and close to many local amenities. Our residents, their families, and visitors enjoy the convenience of local cafes, Wagin Community Resource Centre, Wagin Public Library and Art Gallery, and many local parks and reserves.



Residential Service Lead

Pauline Alexander

With a diverse background in administration, finance and hospitality, Pauline has developed a passion for working in aged care since joining Juniper Waratah Lodge in 2019.

Pauline harbours a great deal of compassion, empathy and kindness for older people and loves being part of the Wagin community. She has an open-door policy and welcomes all feedback from residents, their families, staff and volunteers.

Pauline loves the warm, welcoming and homely vibe at Juniper Waratah Lodge.

She believes in living life to the fullest and thoroughly enjoys working with her dedicated team and prides herself on providing high quality care to all her residents.