



A warm welcome to Juniper Sarah Hardey

Nestled in the foothills of the Darling Scarp in the leafy suburb of Kelmscott, Juniper Sarah Hardey exudes a warm, welcoming atmosphere which provides a home away from home for residents.

Built in the early 2000s to mirror a small house model design, this spacious, light-filled home comprises four separate houses which each contain its own dining and kitchen area, lounge room and communal activity space that can be turned into a library, relaxation room or pampering hub.

Each house offers outlooks onto sprawling gardens which include alfresco dining areas, open grass spaces and paved pathways which are perfect for peaceful walks on sunny days.

Juniper Sarah Hardey has an active lifestyle therapy calendar, which draws from their interests and hobbies and gives residents the opportunity to be as engaged as they choose.

The DINE Experience

At Juniper, we believe food is one of life's greatest pleasures, and serving wholesome, nutritious meals is the key to supporting our residents to live their best life.

Each resident enjoys food from our DINE (Dignity In Nutritional Excellence) initiative. Our seasonally-driven menus are designed by our chefs and prepared daily at our on-site kitchen using local, quality ingredients.



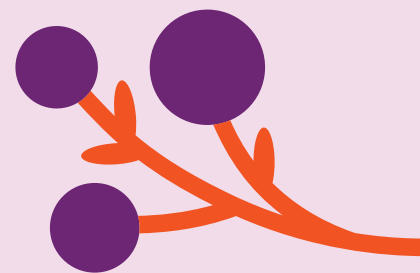
“There are not enough words to express my gratitude and love for all the staff who so lovingly looked after my mum. They honestly went above and beyond the call of duty.”

— Jodie, resident's family member



Address:

222 Cammillo Road, Kelmscott WA 6111





Home Features

- 64 large single rooms with ensuites
- Individualised support through our person-centred care approach
- Enabled Dementia Care
- Numerous light-filled dining rooms, lounges and activity areas.
- Spacious outdoor areas and gardens
- Juniper Connect video calling
- Laundry and domestic help services



Lifestyle and Amenities

- Therapy and lifestyle group activities
- Group and individual exercise programs
- Resident supported outings
- Hair salon
- Pastoral and Spiritual Care



Clinical Care

- 24/7 nursing care
- Regular clinical assessments
- Medication management
- Physiotherapy
- Occupational therapy
- Speech Pathologist
- Dietitian
- Podiatrist
- Palliative Care



Your neighbourhood

Juniper Sarah Hardey is nestled in a peaceful, leafy neighbourhood flanked by the scenic backdrop of the Darling Scarp. Located within close driving distance to Banyowla Regional Park, the home is conveniently located close to local amenities around Kelmscott including shops, public transport and medical centres, with Armadale Hospital also nearby.



Meet Residential Manager

Corrina Alderson

Corrina brings a wealth of experience in aged care and nursing to Juniper Sarah Hardey and is driven by her passion for delivering quality, person-centred care to older people.

Starting out as a carer at another Juniper home, Corrina knew early on in her career that nursing was her calling in life, and went on to become an enrolled nurse, before later upskilling to become a registered nurse.

After a stint working in hospitals, Corrina yearned to return to aged care and became the Clinical Nurse Manager at Juniper Sarah Hardey.

In early 2023, the opportunity arose for Corrina to step up as the home's Residential Manager, a role that she describes as fulfilling her passion for ensuring her residents lead a life filled with meaning and purpose.