

A warm welcome to Juniper Karinya

Formerly City of Bayswater

With a comfortable light-filled environment, a vibrant atmosphere and welcoming staff, residents can immediately feel at home.

Thoughtfully designed and furnished, the homely environment created by the Juniper Karinya care team ensures residents feel loved and respected in their own home.

The home has an active social calendar of events and outings, residents are free to partake as much or as little as they choose. An on-site GP clinic, allied health professionals, nursing and carers ensure residents receive quality person-centred care.

With 70 private rooms with ensuite with garden views spread across two wings, including a dementia-enabled care wing, residents can freely personalise their rooms to make them feel just right.

Visitors can also enjoy Friends' Cafe, an in-home kiosk, with their loved ones, as well as the numerous themed lounges, seating nooks, dining spaces and courtyards.

The DINE Experience

At Juniper, we believe food is one of life's greatest pleasures, and serving wholesome, nutritious meals is the key to supporting our residents to live their best life.

Each resident enjoys food from our DINE (Dignity In Nutritional Excellence) initiative. Our seasonally-driven menus are designed by our chefs and prepared daily at our on-site kitchen using local, quality ingredients.



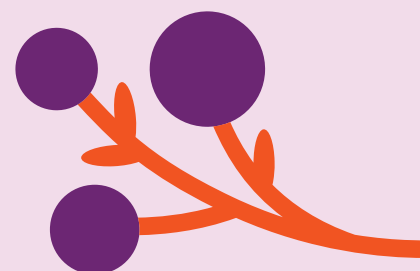
"Great friendly staff. They look after him really well. Great facilities, private room with own bathroom, foods great too. He really enjoys living there - Highly recommend."

- Pink Lady Google Review, resident's family



Address:

21 Embelton Avenue, Embelton WA 6002





Home Features

- 70 large single rooms with ensuites
- Individualised support through our person-centred care approach
- Memory Support wing with enabled dementia care
- Numerous light-filled dining rooms, lounges and large activity room.
- Spacious outdoor areas and gardens
- Juniper Connect video calling
- Laundry and domestic help services



Lifestyle and Amenities

- Therapy and lifestyle group activities
- Group and individual exercise programs
- Wellness suite and Friends Cafe (on-site kiosk)
- Resident supported outings
- Hair salon
- Pastoral & Spiritual Care



Clinical Care

- 24/7 nursing care
- On-site GP clinic
- Regular clinical assessments
- Medication management
- Wellness Centre
- Physiotherapy
- Occupational therapy
- Dietitian
- Podiatrist
- Speech pathology
- Palliative Care



Your neighbourhood

Juniper Karinya is located close to local amenities including medical centres, recreation centre, parks and the retail conveniences of the Morley Galleria. It can be easily accessed with public transport.



Meet Residential Manager

Caroline Pereira

With a background in medicine and more than a decade of experience in aged care, Caroline is passionate about working with older people and thrives on providing high quality care to her residents.

As Residential Manager, Caroline believes in the importance of forging strong relationships with residents and their families, and prides herself on providing an empowering and supportive environment for her staff.

Driven by a genuine compassion for older people, Caroline wants to make a difference in the lives of her residents through creating a happy and safe place for all residents to call home.

She believes in treating everyone with the dignity and respect so that they can lead a fulfilling life with purpose.