



A warm welcome to Juniper Guwardi Ngadu

At Juniper Guwardi Ngadu Residential Aged Care Home in Fitzroy Crossing, outdoor spaces hold a special significance. The home provides individually tailored and culturally appropriate care, with dining and living spaces thoughtfully designed outside, so residents can enjoy a close connection to country.

The single-level home has 12 newly renovated shared rooms that overlook a central courtyard.

From painting, craft afternoons and yarning to evenings together around the fire pit, there are many activities to enjoy at Juniper Guwardi Ngadu Residential Aged Care Home.

The home proudly collaborates with Elders and local community members, fostering a strong connection to community, culture and family. The home also partners with Language Groups, Nindilingarri Cultural Health Services, and Mangkaja Arts, where residents can go to the studio or work in the art space within Juniper Guwardi Ngadu.



“The staff at Guwardi Ngadu have always supported my art and love listening to my stories. It is my happy place.”

— Johnny, Juniper Guwardi Ngadu resident

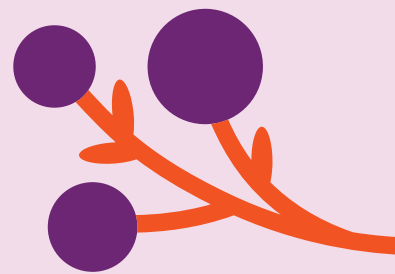


Address:

565 Forrest Rd, Fitzroy Crossing WA 6765

The DINE Experience

At Juniper, we believe food is one of life's greatest pleasures, and serving wholesome, nutritious meals is the key to supporting our residents to live their best life. Each resident enjoys food from our DINE (Dignity In Nutritional Excellence) initiative. Our seasonally-driven menus are designed by our chefs and prepared daily at our on-site kitchen using local, quality ingredients.





Home Features

- 12 newly renovated shared rooms all with ensuite
- Individualised support through our person-centred care approach
- Enabled Dementia Care
- Communal spaces including multiple dining rooms, large central activity room and lounge areas
- Access to courtyards and gardens
- Laundry and domestic help services



Lifestyle and Amenities

- Therapy and lifestyle group activities
- Group and individual exercise programs



Clinical Care

- 24/7 nursing care
- Regular clinical assessments
- Medication management
- Physiotherapy
- Occupational therapy
- Dietician
- Podiatrist
- Speech pathology



Your neighbourhood

Located in Fitzroy Crossing, a small town in the Kimberley region of Western Australia, Juniper Guwardi Ngadu Residential Aged Care Home has a strong connection to community. Residents also have easy access to nearby medical services, community centres and parks.



Meet Residential Manager

Belinda Storer

Belinda Storer has lived in Fitzroy Crossing for over 18 years and was previously the Area Manager for the Shire of Dervt West Kimberley. She brings extensive local experience and knowledge to her role as Residential Manager.

Since 2022, Belinda has been an integral part of Juniper, establishing strong bonds with the local community and Elders.

Belinda has a deep understanding of the needs of her residents. However, it's her genuine love for her residents and staff that truly sets her apart. She adores her team and finds immense joy in supporting them. Recognising the importance of understanding Aboriginal culture, Belinda's role as Residential Manager goes beyond providing care – it's about creating a space where everyone feels respected and cared for.