



A warm welcome to Juniper Gerdewoonem

Juniper Gerdewoonem Residential Aged Care Home in Kununurra is deeply committed to providing individually tailored and culturally appropriate care. The home collaborates with Elders and local community members to foster a strong connection to culture and family.

Residents have access to various communal areas, including multiple dining rooms, a spacious central activity room, and cozy lounge areas. The home has beautifully landscaped courtyards, gardens, and a fire pit.

Our dedicated staff are committed to ensuring that every day is filled with fulfillment and joy. They prioritise supporting residents to maintain vital connections with their family, friends, and culture, whether it is through activities like playing the guitar, painting, singing, or sharing stories.



"I have been made welcome by all staff. Rahul the Residential Manager executes his duties in a professional manner and in a caring way, which makes you feel like you have been listened to and heard."

- Rex, Juniper Gerdewoonam resident

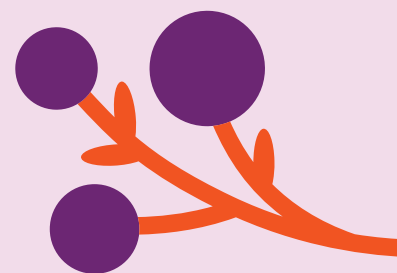


Address:

50 Ivanhoe Rd, Kununurra WA 6743

The DINE Experience

At Juniper, we believe food is one of life's greatest pleasures, and serving wholesome, nutritious meals is the key to supporting our residents to live their best life. Each resident enjoys food from our DINE (Dignity In Nutritional Excellence) initiative. Our seasonally-driven menus are designed by our chefs and prepared daily at our on-site kitchen using local, quality ingredients.





Home Features

- 35 single rooms with ensuite
- Individualised support through our person-centred care approach
- Enabled Dementia Care
- Communal spaces including multiple dining rooms, large central activity room and lounge areas
- Access to courtyards and gardens
- Laundry and domestic help services
- Fire Pit



Lifestyle and Amenities

- Therapy and lifestyle group activities
- Group and individual exercise programs
- Bus outings
- Waringirri Art visits



Clinical Care

- 24/7 nursing care
- Regular clinical assessments
- Medication management
- Physiotherapy
- Occupational therapy
- Dietician
- Podiatrist
- Speech pathology



Your neighbourhood

Located in Kununurra, in the Kimberley region, Juniper Gerdewoonem Residential Aged Care Home Kununurra has a strong connection to community. Residents also have easy access to nearby medical services, community centres and parks.



Meet Residential Manager

Rahul Bhadoria

Rahul's journey at Juniper began in 2011 when he joined as a carer. Over the years, he has completed a Bachelor's degree in Biotechnology and Masters in both Biomedical Science and Nursing Practice.

In 2017, Rahul became a Registered nurse and then went on to take on the role of Clinical Nurse Manager. Rahul was appointed as Acting Residential Manager in 2022, and later that same year, he was officially appointed as the Residential Manager.

Rahul believes in active listening and ensures his residents feel heard and valued, encouraging them to share their invaluable knowledge, memories, culture, and traditions. Rahul's philosophy centers around building trust and acceptance, allowing residents to see the care team not just as caregivers but as members of their extended family.